

## UKCMRI gets planning permission



### Welcome to issue 2 of UKCMRI's newsletter

UKCMRI is building a medical research centre in Brill Place, Somers Town. As you live or work near the proposed new centre we are sending you this newsletter to keep you up-to-date on the project.

Camden Council has given permission for us to build our medical research institute on the unused land at Brill Place behind the British Library.

Camden's Development Control Committee approved plans for the project at a meeting at the Town Hall in December. In January, the Greater London Authority also approved the scheme.

Harpal Kumar, the Chief Executive of Cancer Research UK, one of UKCMRI's founders, welcomed the Council's decision: "The councillors have brought this institute significantly closer to reality. It will help to tackle some of the most difficult scientific

and medical questions – bringing benefits to health and helping us to treat and beat diseases that affect us all. It will engage the public in its work and provide educational benefits to schools locally and nationally."

Building work is likely to start in late spring 2011. Before that we will set up a construction liaison group made up of representatives from community organisations, local people, UKCMRI, the building firm – Laing O'Rourke – and Camden Council. The group will meet monthly to keep people up to date on progress with the development and deal with any building issues.

#### ABOUT THE INSTITUTE

- UKCMRI stands for the UK Centre for Medical Research and Innovation.
- The project was begun by the Medical Research Council, Cancer Research UK, the Wellcome Trust, and UCL (University College London).
- UKCMRI is a registered charity.
- Discoveries made in the laboratories will speed the development of treatments for major diseases such as cancer, heart disease and stroke.
- UKCMRI will bring new jobs, community facilities and other benefits to Somers Town.

#### OUTLINE TIMETABLE

##### Late Spring 2011

Building work starts.

##### Spring 2013

External work completed, internal fit-out starts.

##### Spring 2015

Internal works are completed. The building is ready for use and staff move in.

Above: View from Midland Road at the junction with Brill Place. © Cityscape

# BRINGING BENEFITS TO SOMERS TOWN

UKCMRI and Camden Council have agreed the details of a community benefits package for Somers Town worth almost £10 million. The package will include initiatives to improve health and homes, employment and education, community safety and the environment.



## Health

At the heart of UKCMRI's package is the **Living Centre**, a purpose-built, two-floor 450m<sup>2</sup> community space on the Ossulston Street side of the institute. Designed with local people, and run in partnership with the community, the Living Centre will offer a range of services to help **improve health and wellbeing in Somers Town**.

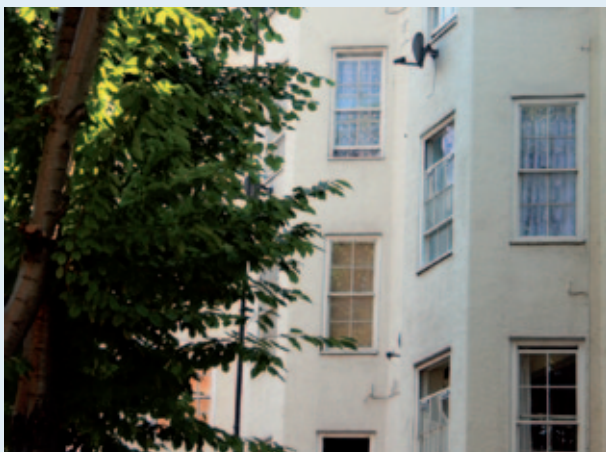
Over the next 18 months UKCMRI will consult the community on the facilities and services they think the Living Centre should offer.

We recognise that there are already a number of local community facilities and organisations that provide excellent services. Our aim is to work with these organisations to add to what is already on offer, not to replace it.



## Improvements to local homes

Council homes close to UKCMRI will benefit from almost **£1.7m** that we are contributing to **Camden's Better Homes programme** – money the Council will spend on insulation or other improvements.



## Education and engagement with science

UKCMRI wants to give young people the chance to engage with science and our research. On the north-east corner of the building, opposite St Pancras, we are building a state-of-the-art **teaching laboratory** for young learners, with **priority access for Camden schools**.

We will develop an **education programme**, and a **volunteering scheme** so UKCMRI staff can spend time working with the local community. And to help Camden schools get the most out of UKCMRI we will employ an **education liaison officer**.

We want to encourage people of all ages to learn more about UKCMRI's work to tackle illnesses like cancer, heart disease and stroke. To do this UKCMRI will have an ambitious **public engagement with science** programme, featuring institute visits, public lectures, exhibitions, projects and events. Community organisations will also be able to use our 450 seat auditorium and exhibition area for their own events, for free.



© John Sturrock

## Job opportunities and local business support

In partnership with Camden Council and King's Cross Working (Camden's construction skills centre) we will train and employ at least **40 apprentices** while the institute is being built.

Once it opens in 2015, UKCMRI will be home to 1,250 researchers and another 250 support staff, including laboratory technicians, IT staff and administrators. Again, **we will work closely with the Council and local training providers** so Camden residents have the skills and experience needed for **jobs and apprenticeships** with us.

We want to support local firms too. Through our **local business support strategy** we will help companies bid for contracts to supply goods and services to UKCMRI. We will also encourage our staff to use local shops and facilities.

## Sustainability and improvements to the local environment

We plan to support a range of environmental improvements in Somers Town.

As well as contributing **£3.8 million** to a new **district energy centre** that will provide **local residents with cheaper heat and power**, we will ensure the UKCMRI building is highly **energy-efficient**. For instance, to cut our carbon dioxide emissions we will use a **combined heat and power** system. We will also put **solar panels** in the south-facing roof to provide extra power from a renewable energy source. And our **green travel plan** will encourage staff and visitors to cycle or use public transport by providing on-site storage for several hundred bikes but just a handful of parking spaces (which will only be for disabled people).

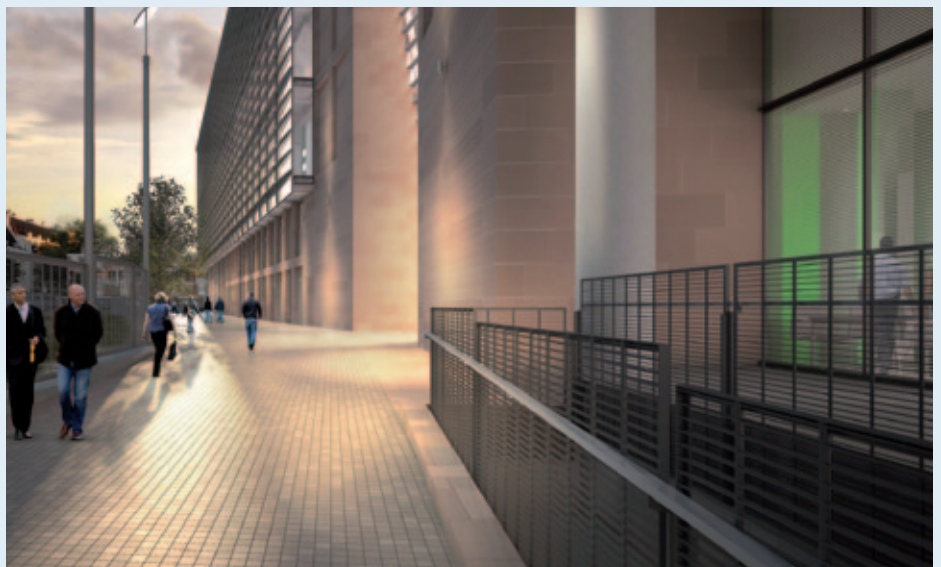
We are contributing **£74,000** to improve public open spaces, in particular **Purchase Street Open Space**. We will create a **courtyard garden** at the junction of Ossulston Street and Brill Place and a **public square** facing Midland Road.



## Improved access and community safety

To meet the need for a direct pedestrian route between Midland Road and Ossulston Street we are creating a pleasant, well-lit **new pathway for pedestrians and cyclists** that will run between the UKCMRI building and the British Library.

UKCMRI will contribute **£360,000** to help fund **two Safer Neighbourhood police officers** for three years. And we will contribute **£130,000** to **community safety measures** in the local area, including CCTV.



Above: A view of the new route linking St Pancras International to Ossulston Street to the south of the UKCMRI building. © Wadworth3D

# Working with the community

We want to give local people the opportunity to help shape some of UKCMRI's plans. In the next few months we will set up three community liaison groups to do this.

The **construction liaison group** will help keep you informed about progress on building UKCMRI and deal with any construction issues.

Through the **community liaison group** we will consult local residents and organisations on how we can work in partnership to bring benefits to Somers Town. For example, through community projects or work with local schools and businesses.

We will also set up the **Living Centre community working group** to consult the community on the services and facilities our purpose-built Living Centre should offer to help improve people's

health and wellbeing (see page 2 for more details).

UKCMRI plans to consult and engage the Somers Town community in other ways too. We have already met over 40 schools, businesses and community organisations and will meet more in the coming months. On top of this we plan more community projects like last year's Somers Town Garden Project, in partnership with local groups – including a plan to design hoardings for the site during construction and an archaeological dig to unearth evidence of the site's history.

We welcome your thoughts on how we can work with the community. Please do get in touch if you would like to share your views, or if you would like us to come and talk to your organisation.

## New home for allotments

UKCMRI's Garden Project has now finished but there will be more allotments for local people in 2011.

The London Wildlife Trust, which ran the project for UKCMRI, has been talking to local residents, Camden Council and Origin Housing about new local sites for the Brill Place allotments.



LWT Project Manager Phil Paulo said: "The UKCMRI's Garden Project was a real success, giving over 100 local people the chance to grow their own food. Many of those who took part want to continue, so we're delighted that we will be able to relocate many of the allotments in Somers Town."

One local gardener said: "We loved the scheme as we don't have our own garden and it has given us the opportunity to grow our own organic food. We would jump at the chance to continue growing at another location next year."

If you, or your community group, are interested in growing your own food, contact the London Wildlife Trust on 020 7833 2311 or [ppaulo@wildlondon.org.uk](mailto:ppaulo@wildlondon.org.uk).

## GET IN TOUCH

If you have any questions, please contact us.

**Email:** [info@ukcmri.ac.uk](mailto:info@ukcmri.ac.uk)

**Web:** [www.ukcmri.ac.uk](http://www.ukcmri.ac.uk)

**Phone:** 0800 028 6731

**Post:** UKCMRI  
PO Box 64746  
London  
NW1W 8HB

**Visit:** On-site exhibition,  
Brill Place, NW1 1HG.

Staff will be on hand to answer your questions and you will be able to see the latest designs and plans for the building.

### OPENING TIMES

Until Easter 2011

Thursdays: 15.00 – 19.00

This newsletter tells you about UKCMRI and its plans to build a medical research centre in Brill Place, Somers Town. If you would like a copy in Bengali, please send your name and address to UKCMRI, PO Box 64746, London, NW1W 8HB or email [info@ukcmri.ac.uk](mailto:info@ukcmri.ac.uk).

এই সংবাদপত্রিকাটি আপনাকে ইউকেসিএমআরআই এবং এদের ব্রিল প্লেস, সোমারস টাউনে একটি চিকিৎসা গবেষণা কেন্দ্র তৈরীর পরিকল্পনার বিষয়ে জানায়। যদি আপনার বাংলায় একটি অনুলিপির প্রয়োজন হয়, অনুগ্রহ করে আপনার নাম ও ঠিকানা UKCMRI, PO Box 64746, London, NW1W 8HB-তে পাঠান বা [info@ukcmri.ac.uk](mailto:info@ukcmri.ac.uk)-তে ইমেইল করুন।

© UKCMRI 2011. TAP1358/15-03-11/V4